



manual /partlists

28/08/2019

hand dosing pump 100ml NV PP11

026-0600

Composites

content

1 hand dosing pump 026-0600	1
1.1 safety instructions	1
1.1.1 global safety instructions	1
1.1.2 misuse	1
1.1.3 remodeling / changing	1
1.1.4 spare parts / accessoires	1
1.1.5 before start up	2
1.1.6 while operating	2
1.1.7 handling of dangerous material	3
1.2 description of equipment	5
1.2.1 function	5
1.2.2 assembly / start up	5
1.3 exploded assembly drawing	6
1.3.1 partlist	7

1 hand dosing pump 026-0600

1.1 safety instructions

the following safety instruction are global instructions. The applicability depends on the unit which is in use.

1.1.1 global safety instructions

installations, start ups, reparation and maintenance may be done only by persons, which comply with following specifications:

- necessary qualification for the planed operations
- permitted from the operating company
- familiar with the corresponding regulations and standards
- familiar with the manual and basic conditions

following conditions does apply for the operator.

- familiar with the manual
- permitted from the operating company
- necessary qualifications for a safe handling with the unit and material

1.1.2 misuse

It is only allowed to use the machine, when the technical conditions are faultless. The intended use of the machine by respecting the safety regulations and the manual is required for operating the machine. Faults and errors especially of safety relevant parts must be repaired and fixed directly.

The producer/provider takes no responsibility for damages which can result from improper use. The operating company bears the full risk. The intended use of the machine includes also respecting the manual.

For special application please contact BÜFA Composite for clarifying the capabilities.

1.1.3 remodeling / changing

It is not allowed to change parts or install mountings, especially when safety installations are affected, with out a permit of the producer/provider. This applies especially for installations and adjustments of safety devices and valves.

1.1.4 spare parts / accessoires

spare parts must be conform with the technical requirements of the producer/provider. Every spare part of BÜFA®-Tec is conform with this requirements.

1.1.5 before start up

Pressure hoses and power cable must be installed with regard to the regulations. Fittings and hoses have to fulfill the requirements.



It is only allowed to work with the machine, when all safety devices (earthing, exhaust, etc.) are without any faults



An earthing connection must be installed before starting to operating with the machine, because of Danger of explosion.

1.1.6 while operating

Safety instructions on the machine must be noted!



Before starting the machine it is important to make sure that nobody can be injured by starting.



Take never aim at somebody with the spraying gun or unit! Do not put a hand or finger in front of the nozzle or spraying head! After working and before breaks secure the spraying gun.



the personal protective equipment must be supported and required by the operating company. Minimum equipment should be safety glasses and gloves.



tight working clothes are recommended and no decoration because of the risk of getting stuck or neck.



While working do not stop exhaust or ventilation units. If not enough fresh air is provide, use respiratory equipment.

The max. pressure of the type plate may not be pass over. .

Every instruction, which seems not to be safe may stopped directly!

1.1.7 handling of dangerous material

The machine will be used with flammable liquids, which build pressure and can explode while getting warmer. Respect the manual and the safety data sheet. The regulations from these documents must be observed.

Substances of the products vaporise easily (styrol, acetone etc.).

Two different main risk arise thereby:



1. **health risk** because of breathing in the substances (take a look on the safety data sheet)



2. **Danger of explosion and fire** because of building a explosive mixture

1. all reservoirs should be keep closed or covered (mixing tanks, acetone and cleaning bins etc.)
2. a good air ventilation must be supplied (exhaust, fresh air etc.)
3. all reservoirs must be connected by earth while working (earthing clamps).
4. It is important to keep the peroxide clean, to avoid a not controlled reaction of the peroxide.
Danger of explosion.

If a leakage is detected, the machine must be stopped directly (shut down and remove pressure) and fixed.

1.2 description of equipment

1.2.1 function

This hand dosing pump is a reciprocating pump with a graduated glass cylinder and a volume of 100 ml. The pump was developed for dosing organic peroxides, other liquids with similar viscosity can also be dosed.

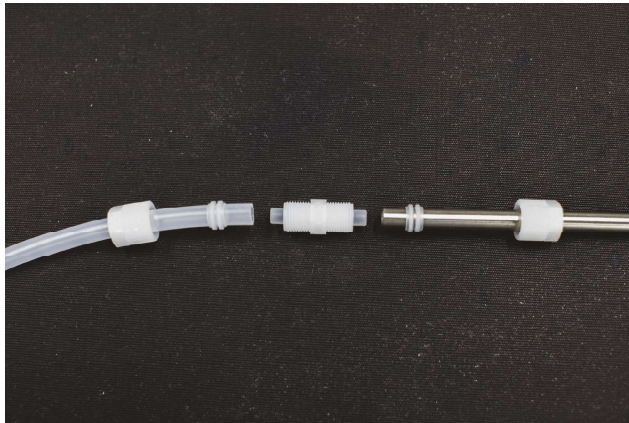
The piston can be moved easily with a lever arm by hand.

The quantity to be dosed can be determined on the cylinder scale. In the case of differing viscosities, the dosing quantity could differ from scale slightly. Gauging the real output should be determined prior using.

The components which are in contact with the product made of PP, PTFE, Glass or stainless steel and therefore resistant to many media. When used for other mediums, prior testing is necessary.

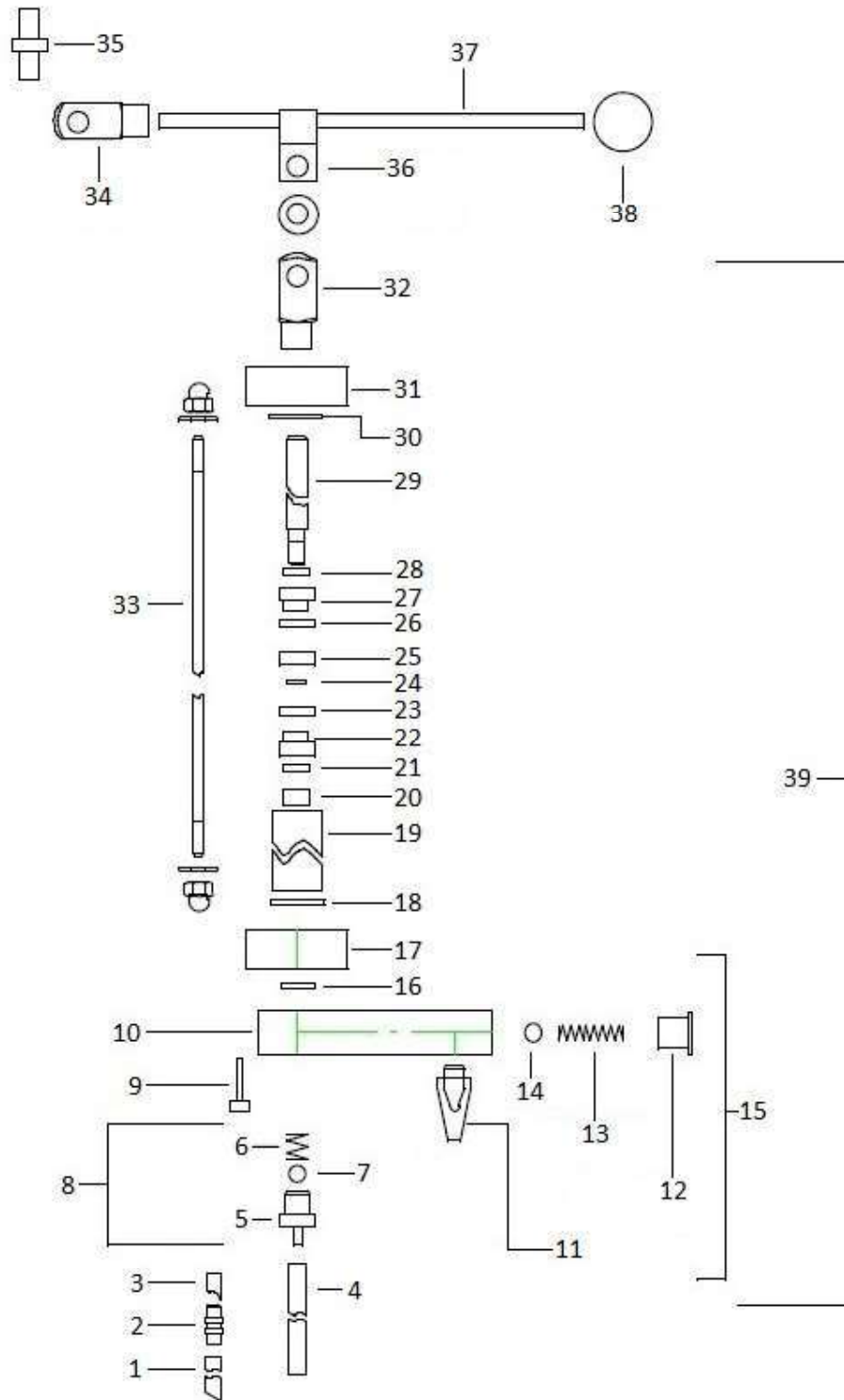
1.2.2 assembly / start up

1. Mount the wall mounting bracket at eye level approx. 1,30 m height on a wall or standing column.
2. Connect the attached suction hose via screwing to the suction pipe and



3. connect the hose with the inlet valve by pushing it over the inlet valve.
The pump is operation ready. The air below the piston can be removed by through small piston strokes.

1.3 exploded assembly drawing



1.3.1 partlist

No.	item no.	description	pcs.	remarks
1	026-4801	suction pipe	1	3
2	026-4871	fitting	1	3
3	029-0804	suction hose 0,05m	1	3
4	029-0804	suction hose 1,30m	1	3
5	026-0662	inlet fitting	1	1,3
6	026-0664	spring	1	1,3
7	026-0663	ball	1	1,3
9	026-4868	screw	3	2,3
10	026-0660	outlet	1	2,3
11	026-4808	outlet nozzle	1	2,3
12	026-0667	plug 1/8"	1	2,3
13	026-0661	pressure spring	1	2,3
14	026-0663	ball	1	2,3
16	026-4870	o-ring	1	2,3
17	026-0668	bottom flange	1	3
18	026-0609	sealing	1	3
19	026-0610	cylinder	1	3
20	029-0611	nut M6	1	3
21	026-0612	washer	1	3
22	026-0613	piston bottom	1	3
23	026-0614	piston sealing bottom	1	3
24	026-0616	o-ring	1	3
25	026-0615	piston middle	1	3
26	026-0614	piston sealing top	1	3
27	026-0613	piston top	1	3
28	026-0612	washer	1	3
29	026-0617	piston rod	1	3
30	026-0609	sealing	1	3
31	026-0618	top flange	1	3
32	026-0619	fork joint with bolt	1	3
33	026-0909	connection rod	3	3
34	026-0619	fork joint	1	
35	026-0628	shaft with set collar	1	
36	026-0626	joint male	1	
37	026-0620	lever	1	
38	026-0621	ball head	1	

spare part kits				
No.	item no.	description	all parts included with	
8	026-0665	inlet valve complete	1	
15	026-0669	outlet valve complete	2	
39	on request	spare pumpe	3	

hand dosing pump 100ml NV PP11



Notizen